

UPPER LOFT

THE SEASIDE CORNER

1,463 SQUARE FEET



THE WAY HOME SHOULD BE.™



UPPER LOFT

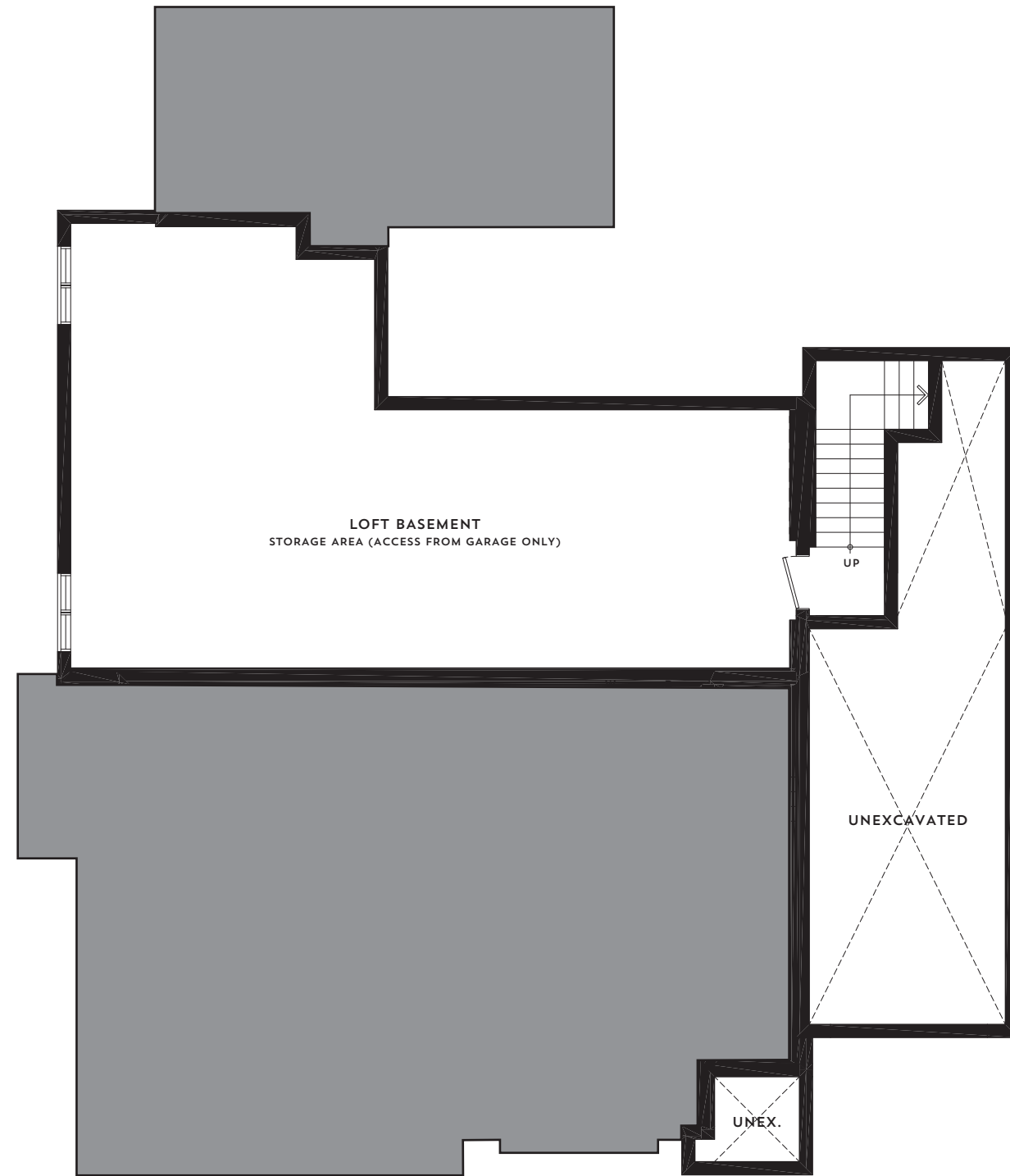
THE SEASIDE CORNER

1,463 SQUARE FEET

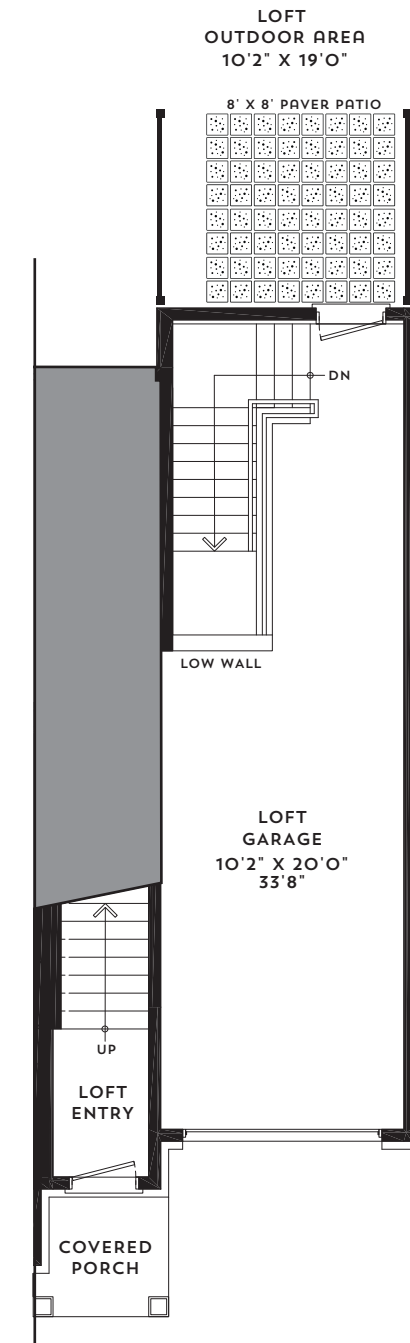


THE WAY HOME SHOULD BE.™

the SHORES
SOUTH COAST VILLAGE TOWNS



▶ UPPER UNIT BASEMENT LEVEL



▶ MAIN FLOOR ENTRY TO LOFT,
GARAGE & BASEMENT AREA



▶ SECOND FLOOR

CRYSTAL BEACH

ALL RENDERINGS ARE ARTIST'S CONCEPT. SIZES, MATERIALS AND SPECIFICATIONS ARE SUBJECT TO CHANGE WITHOUT NOTICE. E.O.E.